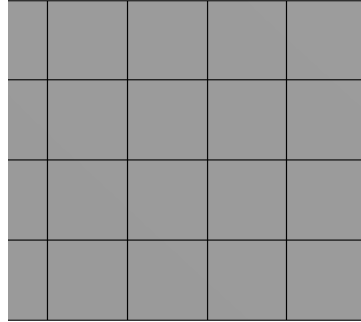


Verification & Validation

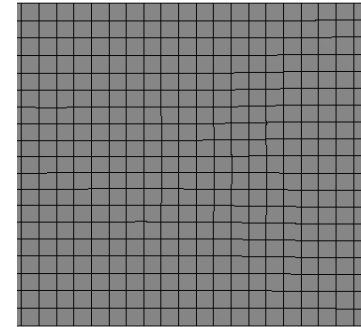
- Verification: **Am I computing things right?**
 - Does my program have bugs?
 - Does my numerical simulation correspond to my mathematical/conceptual model?
 - Is the quality of my approximations and discretization sufficient? → **Today**
- Validation: **Am I computing the right thing?**
 - Is my model a sufficiently good representation of reality? → **Lab Report**
 - Is the underlying mathematical model/my theory good enough?

Discretization in FEA

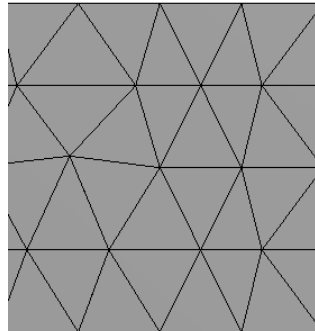
Resolution



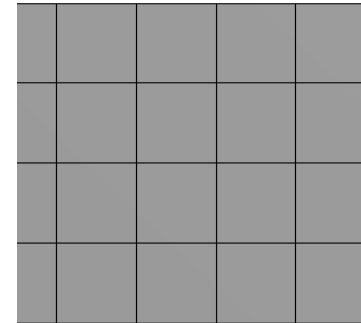
vs.



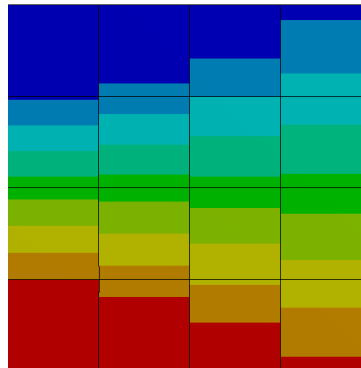
Element shape



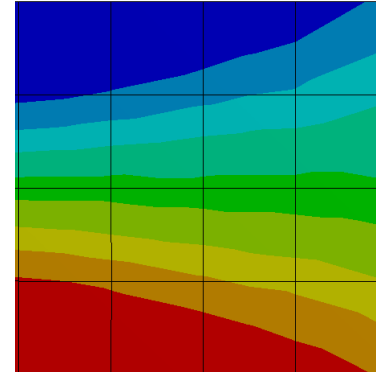
vs.



Interpolation ansatz
(= FE basis functions)



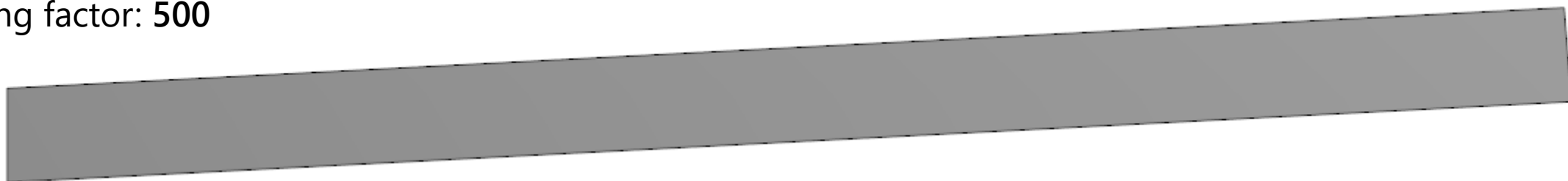
vs.



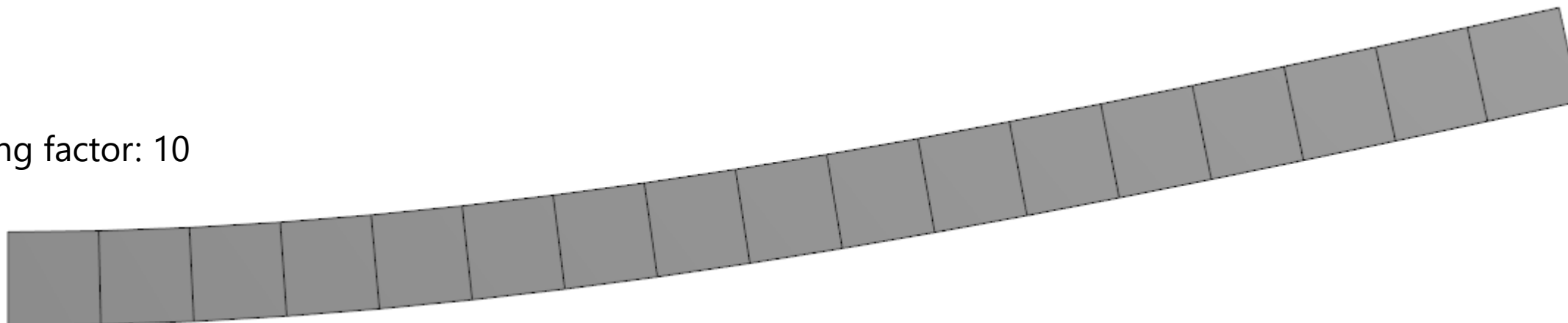
Convergence Analysis



Scaling factor: 500



Scaling factor: 10



Convergence Analysis

